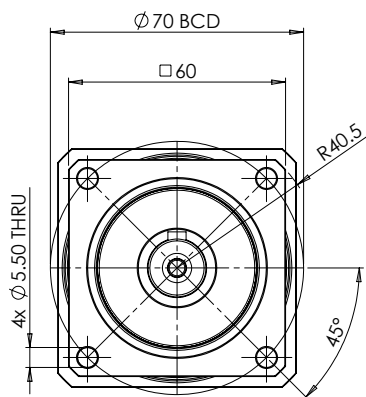
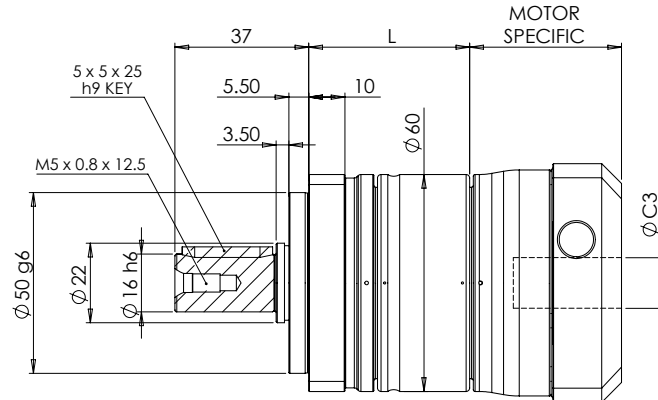


PAII060 – In-line Economy Range – Steel



For precision stainless steel dimensional equivalent see AB060



NOTE: Example gearbox shown with S2 shaft option

DIM L Single Stage = 44.5 mm
DIM L Double Stage = 64.5 mm

| Ratio | Nom. Output Torque (Nm) | Max. Acceleration Torque (Nm) | Emergency Stop Torque (Nm) |
|------------------|-------------------------|-------------------------------|----------------------------|
| ~ SINGLE STAGE ~ | | | |
| 3:1 | 42 | 75.6 | 126 |
| 4:1 | 42 | 75.6 | 126 |
| 5:1 | 40 | 72.0 | 120 |
| 7:1 | 35 | 63.0 | 105 |
| 9:1 | 24 | 43.2 | 72 |
| 10:1 | 27 | 48.6 | 81 |
| ~ DOUBLE STAGE ~ | | | |
| 15:1 | 40 | 72.0 | 120 |
| 16:1 | 42 | 75.6 | 126 |
| 20:1 | 42 | 75.6 | 126 |
| 25:1 | 40 | 72.0 | 120 |
| 30:1 | 40 | 72.0 | 120 |
| 35:1 | 35 | 63.0 | 105 |
| 40:1 | 43 | 77.4 | 129 |
| 50:1 | 40 | 72.0 | 120 |
| 70:1 | 35 | 63.0 | 105 |
| 81:1 | 24 | 43.2 | 72 |
| 100:1 | 27 | 48.6 | 81 |

| Design Parameter | Value |
|-----------------------------------|-------------|
| Max. Motor Shaft Ø (C3) (mm) | see below |
| Nom. Input Speed (rpm) | 4000 |
| Max. Input Speed (rpm) | 6000 |
| Torsional Rigidity (Nm/arcmin) | 2.2 |
| Max. Radial Load on Output (N)* | 1150 |
| Max. Axial Load on Output (N)* | 575 |
| Efficiency (1 STG / 2 STG) (%) | ≥ 97 / ≥ 94 |
| Unit weight (1 STG / 2 STG) (kg) | 1.3 / 1.5 |
| Min. Operating Temperature (°C) | + 0 |
| Max. Operating Temperature (°C) | + 90 |
| Protection Rating | IP65 |
| Noise (dB)** | ≤ 62 |
| No Load Torque (1 / 2 STG) (N) ** | 0.10 / 0.10 |

* Applied at centre of output shaft (Length/2).
For more information, see page 107

** Based on 10:1 ratio @ 3000 rpm without load

| Backlash |
|------------------|
| ~ SINGLE STAGE ~ |
| ≤ 7 arcmin |
| ~ DOUBLE STAGE ~ |
| ≤ 9 arcmin |

| Output Shaft Option | Order Code |
|---------------------|------------|
| Smooth Shaft | S1 |
| Keyed Shaft | S2 |

| Ø C3 | Mass Moment of Inertia (kg/cm ²) | |
|------|--|--------------|
| | Single Stage | Double Stage |
| 8 | 0.12 | 0.10 |
| 11 | 0.19 | 0.16 |
| 14 | 0.22 | 0.20 |
| 19 | 1.53 | 1.51 |

ALL APEX GEARBOXES ARE SUPPLIED LUBRICATED FOR LIFE WITH NYE® NYOGEL 792D SYNTHETIC GREASE AND CONFORM WITH ATEX EQUIPMENT-GROUP II CATEGORY 2 AS STANDARD